



RENEWABLE ENERGY 2022

www.renewableenergy.jp

Accelerating Renewable Energy Integration to aim Sustainable Society

January 26 (Wed) -28 (Fri), 2022 10:00-17:00

TOKYO BIG SIGHT East Hall

Organized by : Japan Council for Renewable Energy

Concurrent Exhibitor

ENEX 2022
Energy and Environment Exhibition

DER Japan
Distributed Energy Resources Japan
2022

Exhibition guidelines

SDGs Special Zone

SUSTAINABLE DEVELOPMENT GOALS



Policy & Concept



Photovoltaics



Solar Thermal Applications



Innovative Bioclimatic Architecture



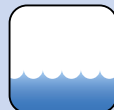
Wind Energy



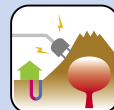
Biomass Utilization & Conversion



Hydrogen & Fuel Cell



Ocean Energy



Geothermal Energy & Ground-Source HP



Energy Network



Energy Conservation & Heat Pump



Small Hydro & Non-Conventional Energy

Show Office

CNT Inc.

1-24-3-4F, Kanda Suda-cho, Chiyoda-ku, Tokyo 101-0041, Japan

Phone +81-3-5297-8855 Fax +81-3-5294-0909 E-mail: info@renewableenergy.jp

Communicating the latest information about renewable energy from Japan to the world
Bringing together advanced technologies that will forge a sustainable planet

Renewable Energy 2022 Exhibition & Forums

Overall Structure

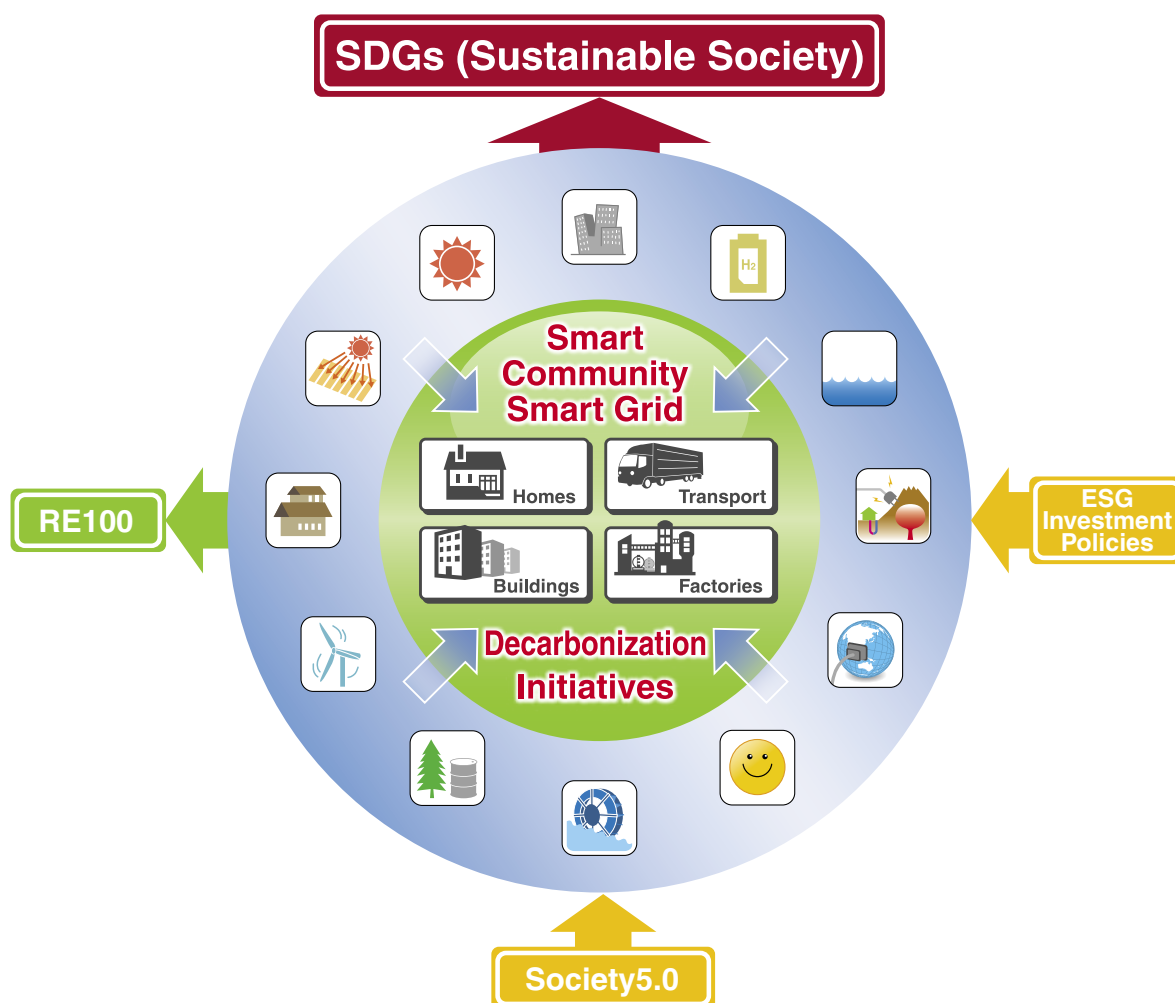
◆ Outline

Show Title :	RENEWABLE ENERGY 2022 EXHIBITION & FORUM
Dates :	January 26 (Wed.) ~ 28 (Fri.), 2022 10:00-17:00
Venue :	TOKYO BIG SIGHT East Hall
Organized by :	Japan Council for Renewable Energy (JCRE)
Co-organized by :	New Energy and Industrial Technology Development Organization (NEDO) National Institute of Advanced Industrial Science and Technology (AIST) Japan Science and Technology Agency (JST) New Energy Foundation (NEF)
Special Cooperation :	Takahashi Industrial and Economic Research Foundation SANKEI SHIMBUN CO.,LTD.

◆ Exhibition

Booth displays will be provided by major companies and organizations involved in all fields of renewable energy, as well as in energy and the environment in general.

Exhibitors will promote the latest products, technologies, services, peripherals, and other information contributing to conservation of the global environment.



Japan Council for Renewable Energy (JCRE)

Advanced Technology Paths to Global Sustainability

<http://www.renewableenergy.jp>

◆ Concurrent Exhibition

Enhance renewable energy and energy conservation efforts to create a supply-demand Integrated energy exhibition



Exhibition Categories

We are seeking products, technologies, services, peripherals, and information related to renewable energy and all other energy- and environment-related fields that contribute to conservation of the global environment.



Policy & Concept

Renewable energy promotion systems, global environment RE100, Eco Model City, Future City



Wind Energy

Advanced wind turbines (large to small), wind assessment tools



Geothermal Energy & Ground-Source HP

Current and advanced methods, applications and systems



Photovoltaics

Advanced products and materials, innovative technologies



Biomass Utilization & Conversion

Conversion methods for heat and power, bio-fuels, applications



Energy Network

Power Storage and System, Grid Connection, Demand Control, Smart Community, Power Electronics, Superconductor and System



Solar Thermal Applications

Heat and Power integration, products and systems, co-generation



Hydrogen & Fuel Cell

Current and future FC products, applications, FC vehicles, hydrogen society



Energy Conservation & Heat Pump

Heat and energy cascade, entropy applications, FC vehicles, hydrogen society



Innovative Bioclimatic Architecture

Zero energy consumption, energy-efficient housing, design and construction, materials



Ocean Energy

Power generation systems, integrated utilization, marine resources



Small Hydro & Non-Conventional Energy

Specific advanced technologies in the 12 renewable energy categories and technologies aimed at increasing renewable energy uptake

Resilient smart grid technologies for making the best use of electricity from renewable sources such as photovoltaic generation and wind energy

Smart community-building that makes effective use of regional and district-based energy

Zero-energy houses (ZEH), zero-energy building (ZEB), and energy creation focused on living environments, and advanced energy conservation technologies

Low-carbon technologies and product commercialization technologies that utilize phase changes through dissolution and chemical reactions

State-of-the-art energy storage technologies and systems (electricity storage, thermal storage, pressure accumulation, and P to X [hydrogen])

SDGs Special Zone

Progressing with RE100 and other initiatives that contribute to achieving the SDGs requires not only efficient use of renewable energy, but also technologies and systems that can be deployed across all sectors of industry, along with the integration and engineering necessary to make use of them. The aim in this zone is to present a wide range of initiatives for making the best use of renewable energy technologies, including Society 5.0 technologies (AI, data visualization employing IoT, prediction technology using big data, robotics, etc.).

<< Exhibition Categories >>

Exhibitors in the SDGs Special Zone can give a 30-minute presentation for no additional charge.

- Initiatives at RE100 companies
- Initiatives at companies presenting projects that are involved in the energy- and environment-related aspects of the SDGs, and exhibits by companies promoting Society 5.0
- Initiatives at public entities such as the national government, local governments, embassies, and public corporations
- Initiatives at companies that assist with the integration of renewables into energy systems, such as engineering firms, systems integrators, and consultants
- Initiatives at financial institutions that pursue ESG investment policies

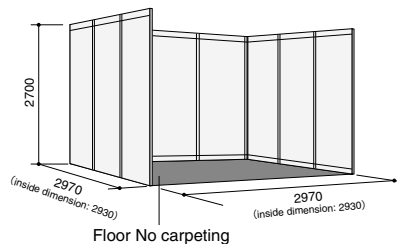
Deadline for Applications: September 30, 2021

◆ Booth Specifications and Exhibition Fee

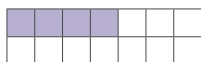
● Booth specifications

1 booth (width 2.97m × depth 2.97m • center to center)

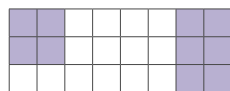
- Exhibition fee Firms 374,000 yen (tax included, per booth)
Associations, Public Organizations, University 297,000 yen (tax included, per booth)



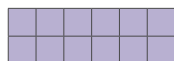
- Layout of booths You can select any floor pattern from those below according to the number of modular panels you wish to use.



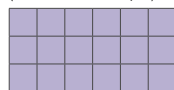
① Row type
1 to 7 booths (with basic wall panels for the back and slides)



② Block (double) booths
4 or 6 booths (with basic wall panels for the back and slides)
(Two or three sides open)



③ Island (double) booths
8, 10, 12 booths (Four sides open without any wall panels)



④ Island (triple) booths
9, 12, 15, 18 booths (Four sides open without any wall panels)
* If you need more than 19 booths, please contact the show office.

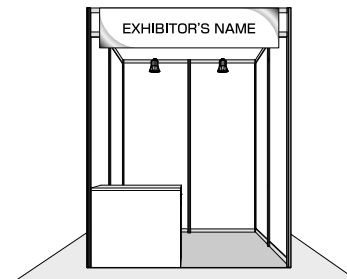
Package Booth (4 square meters)

● Booth specifications

1 booth (width 1.98m × depth 1.98m • center to center)

- Exhibition fee 267,300 yen (tax included, decorations included)

The offer cannot be combined with A type booth. Up to two booths per company



Included in the exhibition fee:

Wall: System panel (white, W1980×D1980×H2700)

Parapet: System panel (white, H300)

Company name plate

Floor with carpet (choose from red, blue and green)

Electric construction and charge (1kW)

Lightning: LED light 20W×1, LED spotlight 15W×2, electrical outlet×1

Furniture: Information counter (W900×D450×H800) ×1

Folding chair×1

* No deductions can be made even when the basic display mentioned above is not used.

◆ Schedule

September 30 (Thu.), 2021	Deadline for booth reservation
Middle of October, 2021	Pre-briefing session for exhibitors (JP only) / Exhibitor's manual available
Early December, 2021	Deadline for exhibition fee payment
January 24 (Mon.) – 25 (Tue.), 2022	Move in (booth installation)
January 26 (Wed.) – 28 (Fri.), 2022	Exhibition

◆ Application

Simply complete the Application Form and send it to the Secretariat by online. (<https://application.jcdebizmatch.jp/en/nanotech2022/renewable>)

* Applications will close when all space is allocated even before the deadline.

Exhibition Fee Payment

An invoice will be issued by the exhibitor online system after receiving the official application.

◆ Cancellation

In principle, cancellation will not be accepted after Sep. 30, 2021. Only when the Secretariat deems it unavoidable will cancellations be accepted, and in such cases the following penalties will be incurred based on the date when written notice of cancellation is received.

Based on the date of cancellation	Cancellation fee
To Sep. 30, 2021	50% of invoiced amount (tax included)
From Oct. 1, 2021	100% of the invoiced amount (tax included)

◆ Venue

TOKYO BIG SIGHT East Hall

<http://www.bigsight.jp/english/>

3-11-1 Ariake, Koto-ku, Tokyo, Japan 135-0063 TEL: +81-3-5530-1111

Application and Inquiry

RENEWABLE ENERGY 2022 Show Office

CNT Inc. 1-24-3-4F, Kanda Suda-cho, Chiyoda-ku, Tokyo 101-0041, Japan
Phone +81-3-5297-8855 Fax +81-3-5294-0909 E-mail: info@renewableenergy.jp