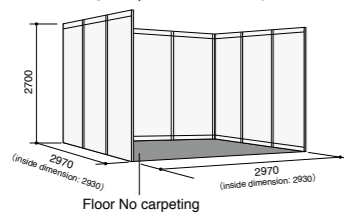


Deadline for Applications: March 31, 2020

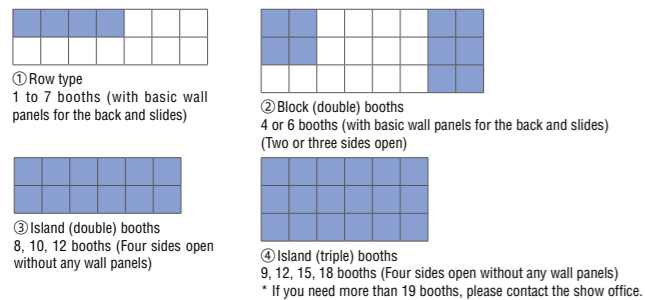
## ◆ Booth Specifications and Exhibition Fee

### A Type Booth

- Booth specifications  
1 booth (width 2.97m × depth 2.97m • center to center)
- Exhibition fee 418,000 yen (tax included, per booth)



- Layout of booths You can select any floor pattern from those below according to the number of modular panels you wish to use.



#### ● Booth layout and height limit

- 1 to 7 booths: Exhibitors can decorate the booths to a height of 2.7 m. (a one-meter setback from the passage and from the basic panel can accommodate a decoration of up to 3.6 meters.)
- More than 8 booths: Exhibitors can decorate the booths to a height of 5 m.

### Package Plan

- One booth type 104,500 yen (including tax)
- Two booth type 165,000 yen (including tax)



- Included in the exhibition fee:**  
 Wall: System panel (white, W2970×D2970×H2700)  
 Parapet: System panel (white, H300)  
 Company name plate (W1800×H400)  
 Floor with carpet (choose from red, blue and green)  
 Electric construction and charge (1kW)  
 Lightning: LED light 20W×1, LED spotlight 15W×2, electrical outlet×1  
 Furniture: Information counter (W900×D450×H800) ×1  
 Folding chair×1

- \* Other furniture will be available in the Exhibitor Manual.
- \* Please apply to the Package Plan by sending the application form enclosed in the Exhibitor Manual (sent in April).

## ◆ Schedule

March 31, 2020	Exhibition application deadline
April	Floor Plan and Exhibitor Manual Release
July 6 (Mon.) ~ 7 (Tue.)	Booth construction, decoration setting up
July 8 (Wed.) ~ 10 (Fri.)	"RENEWABLE ENERGY 2020"
July 10 (Fri.)	Removal

## ◆ Access

### PACIFICO YOKOHAMA

<http://www.pacifico.co.jp/english/>

#### From Airport to Yokohama

- Access to/from Narita International Airport Airport
  - Limousine Bus - From Narita Airport directly to hotels in Yokohama area
  - Narita Express Rail - N'EX - From Narita Airport to Yokohama city center
- Access to/from Haneda Airport
  - Keikyu Bus

#### From Yokohama station to Pacifico Yokohama

- From Yokohama Sta./YCAT to Pacifico Yokohama
  - 3 min by JR Keihin-Tohoku Line to Sakuragicho Sta., 13 min walk.
  - 3 min by Minato Mirai Line (Subway) to Minato Mirai Sta., 3 min walk.
  - 10 min by taxi (Approximately 1,000JPY) to Pacifico Yokohama.

### Application and Inquiry

#### RENEWABLE ENERGY 2020 Show Office

CNT Inc. 1-24-3-4F, Kanda Suda-cho, Chiyoda-ku, Tokyo 101-0041, Japan  
Phone +81-3-5297-8855 Fax +81-3-5294-0909 E-mail: info@renewableenergy.jp



# RENEWABLE ENERGY 2020

[www.renewableenergy.jp](http://www.renewableenergy.jp)

Accelerating Renewable Energy Integration to aim Sustainable Society

July 8 (Wed) - 10 (Fri), 2020 10:00 - 17:00

PACIFICO YOKOHAMA

Organized by : Japan Council for Renewable Energy

Exhibition guidelines

New Plan: SDGs Special Zone

SUSTAINABLE DEVELOPMENT GOALS



Show Office

CNT Inc.

1-24-3-4F, Kanda Suda-cho, Chiyoda-ku, Tokyo 101-0041, Japan  
Phone +81-3-5297-8855 Fax +81-3-5294-0909 E-mail: info@renewableenergy.jp

Communicating the latest information about renewable energy from Japan to the world  
Bringing together advanced technologies that will forge a sustainable planet

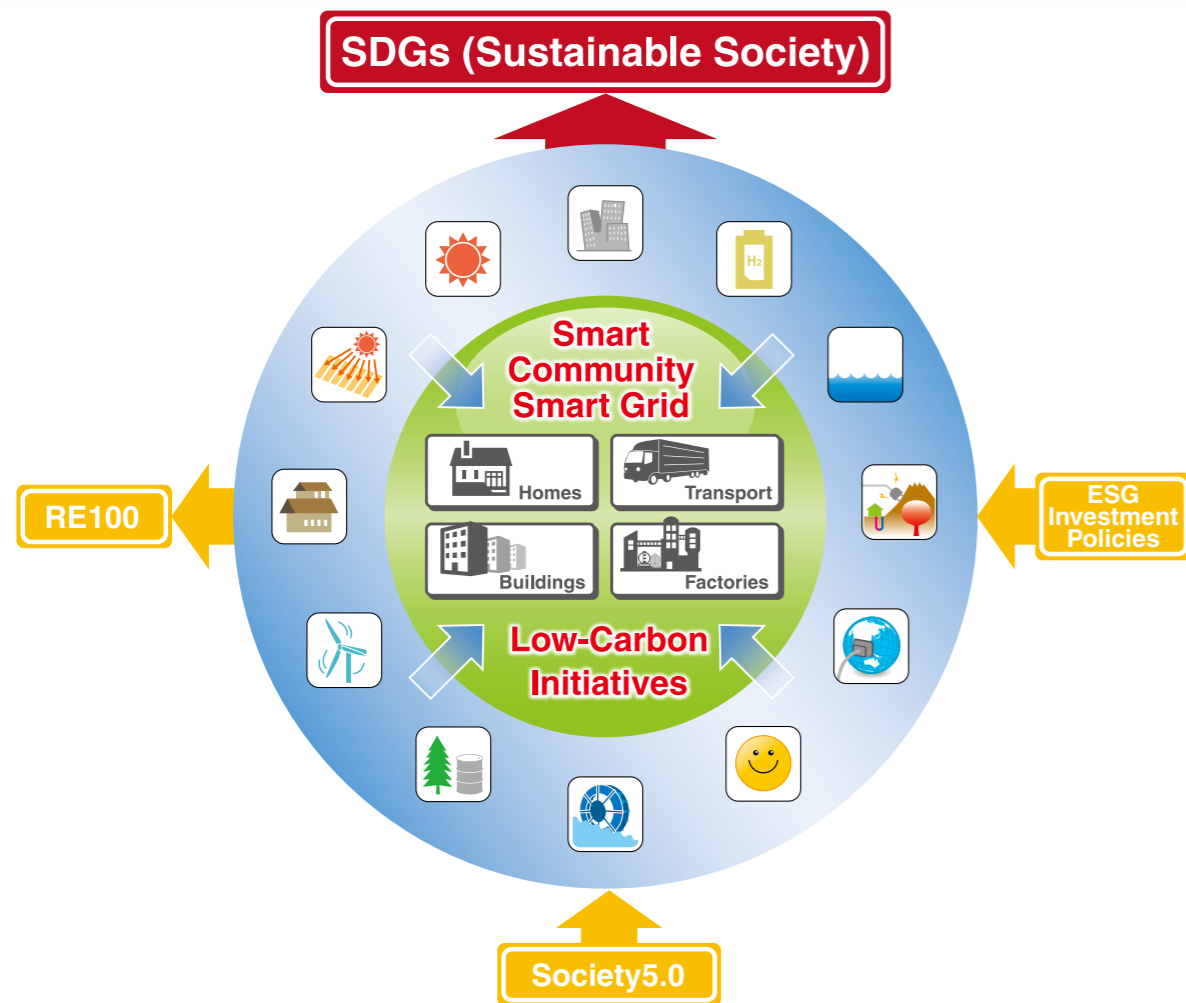
# Renewable Energy 2020 Exhibition & Forums

## Overall Structure

### ◆ Exhibition

Booth displays will be provided by major companies and organizations involved in all fields of renewable energy, as well as in energy and the environment in general.

Exhibitors will promote the latest products, technologies, services, peripherals, and other information contributing to conservation of the global environment



## SDGs Special Zone

Progressing with RE100 and other initiatives that contribute to achieving the SDGs requires not only efficient use of renewable energy, but also technologies and systems that can be deployed across all sectors of industry, along with the integration and engineering necessary to make use of them. The aim in this zone is to present a wide range of initiatives for making the best use of renewable energy technologies, including Society 5.0 technologies (AI, data visualization employing IoT, prediction technology using big data, robotics, etc.).

### ◀ Exhibition Categories ▶

Exhibitors in the SDGs Special Zone can give a 30-minute presentation for no additional charge.

- Initiatives at RE100 companies
- Initiatives at companies presenting projects that are involved in the energy- and environment-related aspects of the SDGs, and exhibits by companies promoting Society 5.0
- Initiatives at public entities such as the national government, local governments, embassies, and public corporations
- Initiatives at companies that assist with the integration of renewables into energy systems, such as engineering firms, systems integrators, and consultants
- Initiatives at financial institutions that pursue ESG investment policies



**Japan Council for Renewable Energy (JCRC)**  
Advanced Technology Paths to Global Sustainability  
<http://www.renewableenergy.jp>

### Exhibition Categories

We are seeking products, technologies, services, peripherals, and information related to renewable energy and all other energy- and environment-related fields that contribute to conservation of the global environment.

<b>Policy &amp; Concept</b> Renewable energy promotion systems, global environment RE100, Eco Model City, Future City	<b>Wind Energy</b> Advanced wind turbines (large to small), wind assessment tools	<b>Geothermal Energy &amp; Ground-Source HP</b> Current and advanced methods, applications and systems
<b>Photovoltaics</b> Advanced products and materials, innovative technologies	<b>Biomass Utilization &amp; Conversion</b> Conversion methods for heat and power, bio-fuels, applications	<b>Energy Network</b> Power Storage and System, Grid Connection, Demand Control, Smart Community, Power Electronics, Superconductor and System
<b>Solar Thermal Applications</b> Heat and Power integration, products and systems, co-generation	<b>Hydrogen &amp; Fuel Cell</b> Current and future FC products, applications, FC vehicles, hydrogen society	<b>Energy Conservation &amp; Heat Pump</b> Heat and energy cascade, entropy applications, FC vehicles, hydrogen society
<b>Innovative Bioclimatic Architecture</b> Zero energy consumption, energy-efficient housing, design and construction, materials	<b>Ocean Energy</b> Power generation systems, integrated utilization, marine resources	<b>Small Hydro &amp; Non-Conventional Energy</b>

Specific advanced technologies in the 12 renewable energy categories and technologies aimed at increasing renewable energy uptake

Resilient smart grid technologies for making the best use of electricity from renewable sources such as photovoltaic generation and wind energy

Smart community-building that makes effective use of regional and district-based energy

Zero-energy houses (ZEH), zero-energy building (ZEB), and energy creation focused on living environments, and advanced energy conservation technologies

Low-carbon technologies and product commercialization technologies that utilize phase changes through dissolution and chemical reactions

State-of-the-art energy storage technologies and systems (electricity storage, thermal storage, pressure accumulation, and P to X [hydrogen])

### Keynote Speech

The two exhibitions to be held concurrently at the venue will have a single, combined keynote speech. The speech will address recent government policy and industry trends relating to renewable energy and eco-solutions.



### Forums Covering 12 Categories

The two exhibitions to be held concurrently at the venue will have a single, combined keynote speech. The speech will address recent government policy and industry trends relating to renewable energy and eco-solutions.



### Academic Zone

Organizations such as university research labs will promote cooperation between industry and academia by sharing information about cutting-edge renewable energy and related technologies.



### Presentations by Exhibitors

Exhibitors will give detailed presentations at the exhibition venue on their company's products and solutions.



### Photovoltaics Power Generation Seminars

The Japan Photovoltaics Energy Association will host seminars at the exhibition venue over the three days of the event. The seminars will cover the latest developments regarding the end of eligibility for feed-in-tariffs (FIT), and offer other up-to-date information on photovoltaic power generation designed to operate reliably over the long term.

## ◆ Report of Previous Event in 2019

**Show Title:** RENEWABLE ENERGY 2019  
**Dates:** July 10 (Wed.) – 12 (Fri.), 2019 10:00 ~ 17:00  
**Venue:** PACIFICO YOKOHAMA  
**Organized by:** Japan Council for Renewable Energy  
**Simultaneous event:** PV2019

**Number of Exhibitors:** 129 companies and organizations  
**Number of Booths:** 228  
**Number of Visitors:** 11,765